

HOSPITALITY | LEISURE | RESIDENTIAL

ARGO
development studio

INTRODUCTION

ARGO Development Studio was founded by Managing Director, David Campion.

David lectured and tutored at the School of Architecture, DIT, Ireland and has over 25 years of industry experience in design and development, working across a number of sectors in the US, Europe and in the Caribbean.

ARGO is an international, award-winning architectural practice specialising in digital construction and climate intelligence. We utilise a design and construction process called Building Information Modelling (BIM).

This process allows ARGO to design, cost and construct more intelligent, resilient and climate-positive buildings in a 3D virtual environment achieving savings of up to 20% over conventional 2D delivery.

ARGO offers a sixteen (16) hour workday as standard by availing of a six (6) hour time zone overlap by splitting it's teams between offices in Europe, Barbados, Dominica, St. Vincent and the Grenadines and Jamaica.

We provide efficient expertise, cost certainty and on time delivery to our clients. ARGO's diverse team, supported by strong leadership, allows us to serve as a client guardian of built asset delivery, safeguarding the project journey, from concept to completion.

This brochure features some of David's and ARGO's projects over the years.



Buccament Bay Residence Club, St. Vincent & The Grenadines

DESIGN

We deliver architecture of its time with a considered appreciation for environmental, social, cultural and economic concerns. We believe excellence is timeless and the principles of form and space transcend the bonds of fashion and style.

Our process develops naturally from the pursuit of perfection through solutions and ideas. Our teams are multidisciplinary and specialize in master planning, architecture, interior design and graphic design.

ARGO has designed a number of award-winning and internationally acclaimed projects across several sectors including Hospitality and Leisure, Education, Transport and Infrastructure, Conservation and Heritage, Residential and Mixed-Use.

We believe that cross collaboration amongst our studio members is an integral part of the design process. As a design collective, we are skilled at creating bespoke solutions which are functional, practical, imaginative and innovative.



ARGO rediscovers the synergies of the Master Builder to realize excellence in delivery through meticulous attention to detail.

CLIENTS & PARTNERS



AWARDS & ACHIEVEMENTS

2020 - IDB Lab

- Innovation grant to prototype new modular home delivered through digital construction.

2019 - 45th WorldSkills Competition

- Gold Winner in BIM, ARGO represented by team member, Ryan Dempsey

2019 – International Property Awards

- Hotel Architecture, The Fort Young Hotel Redevelopment, Dominica
- Hotel Interiors, The Fort Young Hotel Palisades Restaurant, Dominica
- Leisure Architecture, Zing Zing Restaurant and Gommier Spa, Dominica
- New Hotel Construction and Design, Fort Blocks, The Fort Young Hotel, Dominica

2019 - Royal Institute of Architects, Ireland – Selected for Exhibition

- Zing Zing Restaurant and Gommier Spa Redevelopment, Dominica

2019 – Pan American Health Organisation (PAHO)

- Selected to lead SMART hospitals initiative project.

2019 – World Health Organisation (WHO)

- Selected to lead SMART hospitals initiative project.

2019 – Enterprise Ireland

- Selected as an Irish firm exporting highly valuable services and promoting Irish expertise abroad. Received funding to perform in-depth market research activities and to expand to new territories in the Caribbean.

2017 - International Property Award Winner – Best Retail Development Caribbean

- Ozone Wireless Headquarters and Experience Store, Barbados

2016 – International Property Awards (Americas) - Best New Hotel Construction & Design

- The Development of the Marriott Hotel, Port-au-Prince, Haiti

2015 – International Property Awards (Americas) – Best Hotel Caribbean

- The Development of the Marriott Hotel, Port-au-Prince, Haiti

SERVICES

Our teams have delivered several award-winning and internationally acclaimed projects and have extensive experience in various sectors.



Services provided include:

- Architecture
- Master Planning
- Interior Design
- Conservation and Infrastructure Projects
- Management Contracting

PORTFOLIO



Our pursuit of excellence in design and development is informed by a clear understanding of client needs and aspirations.

PARK HYATT
ST. GEORGE, ST. KITTS & NEVIS

HOSPITALITY | LEISURE | COMPLETED



The Park Hyatt hotel and luxury residences are set within the Christophe Harbour Development on Banana Bay, the most natural and untouched region of this beautiful island that features the award winning presidential villa.

PARK HYATT PRESIDENTIAL VILLAS
PARK HYATT, ST. KITTS & NEVIS

HOSPITALITY | RESIDENTIAL | COMPLETED



This three-bedroom two storey 5,280 square foot villa has additional private decks and pool at 2,250 square feet. The Villa also consists of a private health club, pool table/game room, and a 25 foot infinity pool stretching out towards the straits between St. Kitts and the neighboring island of Nevis.

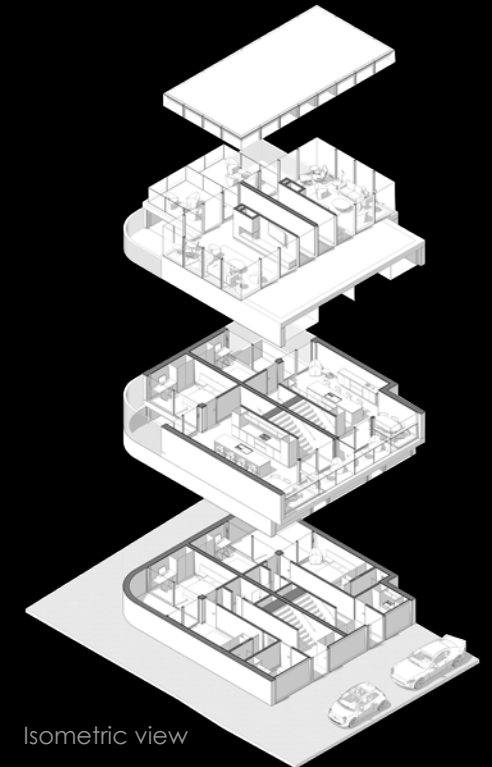
RATHMINES TOWNHOUSES

MEWS, DUBLIN, IRELAND

RESIDENTIAL | DESIGN



Look and feel reference image.



Isometric view

These 2no. three-storey modern townhouses each comprise of 1,375 square feet with both units containing three bedrooms and three bathrooms, a private terrace and off-street car parking.

TRINITY HALL STUDENT RESIDENCES

DARTRY, IRELAND

RESIDENTIAL | COMPLETED



Development comprising c.25,000 sq.m. of accommodation distributed over three buildings on a c.4.27 hectare site. This project was a task in innovation in a historical area in the context of economic and time constraints to create a unique architectural, environmental, historic, social, statutory and economical project.

APES HILL GOLF & BEACH CLUB

APES HILL, BARBADOS

HOSPITALITY | LEISURE | UNDER CONSTRUCTION



The Apes Hill Golf and Beach Club, when completed will have a fully renovated 18-hole, par-72 championship golf course. The facilities will include the Golf Performance and Teaching Centre with a state-of-the-art Titleist Performance Institute. Other additions include a renovated clubhouse with the new Drunken Monkey bar and veranda restaurant, fitness centre, lap pool and yoga garden, hiking and biking trails with outdoor calisthenics gym, pro shop and farm shop, along with luxury homes.

FORT YOUNG HOTEL
ROSEAU, DOMINICA

HOSPITALITY | UNDER CONSTRUCTION



A proud staple of Dominica's heritage, the Fort Young Hotel project includes the redesign and refurbishment of the existing 40 room hotel and the design of a new 60 room hotel block.

FORT YOUNG HOTEL SUITES
ROSEAU, DOMINICA

HOSPITALITY | UNDER CONSTRUCTION



This project entails the conservation and conversion of the original 18th century fort and associated buildings at The Fort Young Hotel with historical anecdotes dispersed throughout the new fort block rooms.

PALISADES RESTAURANT
FORT YOUNG HOTEL, DOMINICA

HOSPITALITY | COMPLETED



Designed and redeveloped following the passage of Hurricane Maria in 2017, the Palisades Restaurant is the only seaside restaurant in Roseau, Dominica that offers panoramic views of the Caribbean Sea. The restaurant was also a winner of the International Property Awards in 2019 for Best Hotel Interiors (Americas).

JACKO'S BAR
FORT YOUNG HOTEL, DOMINICA

HOSPITALITY | LEISURE | COMPLETED

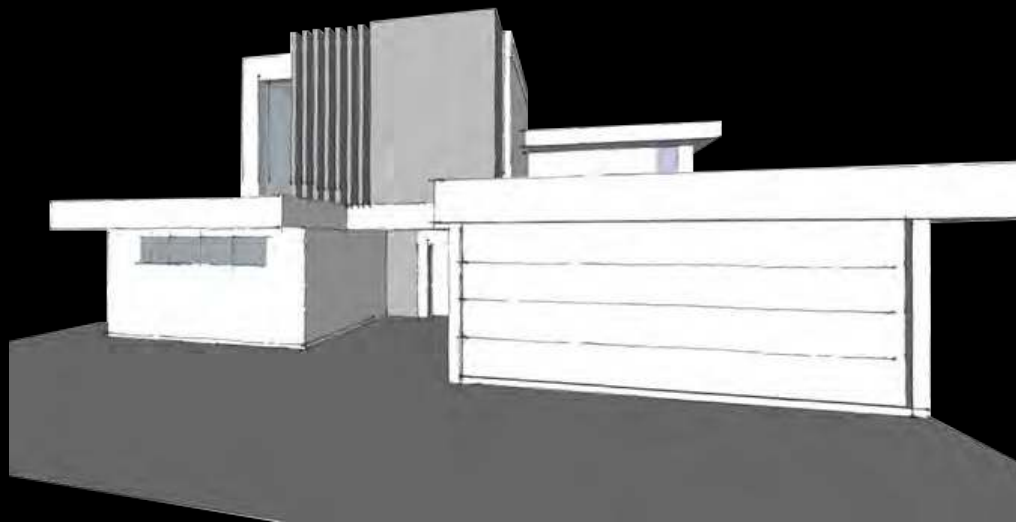


The Fort Young Hotel, winner of Best Hotel Architecture-International Property Awards, 2019 underwent several renovations after the passage of Hurricane Maria in 2017. Jacko's, a pool side bar, with an extended boardwalk, was part of the new experiences at the Fort Young Hotel.

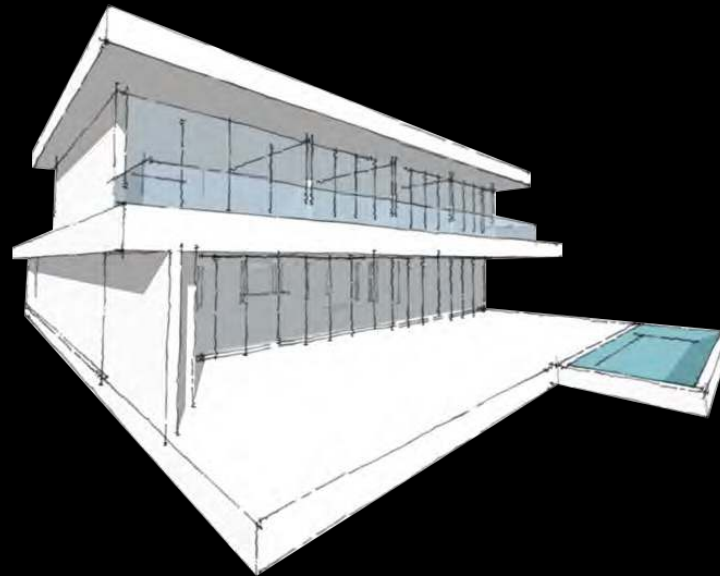
ATLANTIC SHORES VILLA DEVELOPMENT

CHRIST CHURCH, BARBADOS

RESIDENTIAL | DESIGN



Front perspective view



Rear perspective view



These ocean-side beach villa designs, comprises of 4,051 square feet featuring an open concept kitchen, dining and living room that opens out to an extended verandah with loungers and outdoor kitchen space. The upper level bedrooms, all ensuite, capture magnificent views of the ocean and low-lying landscaped gardens.

FORT WILLIAM RESIDENTIAL DEVELOPMENT
DUBLIN, IRELAND

RESIDENTIAL | COMPLETED

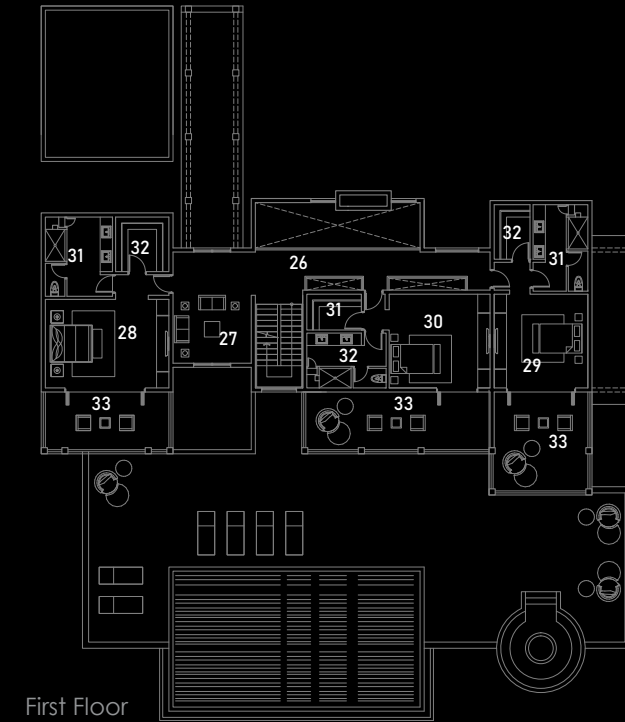
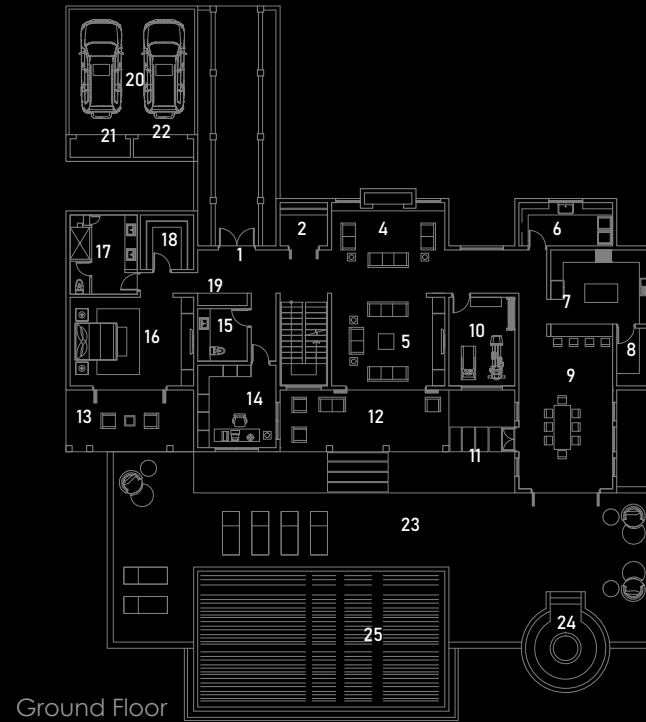


This residential development has two detached houses and two semi-detached houses with two car parking spaces with each house, in the affluent area of South Dublin. Currently under construction, these exclusive large four-bed family homes range in size from 2,271 to 2,594 square feet. ARGO is performing the role of Executive Architect.

PEBBLE BEACH GOLF RESORT VILLA DEVELOPMENT

PEBBLE BEACH RESORT, CALIFORNIA

RESIDENTIAL | DESIGN



Ground Floor

1. Entrance Foyer
2. Coat Closet
3. Lounge
4. Fire Place
5. Living Room
6. Laundry
7. Kitchen
8. Pantry
9. Dining Room
10. Gym
11. Garden
12. Covered Terrace
13. Terrace
14. Library/Study
15. Power
16. Bedroom
17. Ensuite
18. Closet
19. Wine Cellar
20. Carport

First Floor

21. Mechanical Room
22. Storage
23. Pool Deck
24. Fire Pit
25. Pool
26. Walkway
27. Lounge
28. Master Bedroom 1
29. Master Bedroom 2
30. Master Bedroom 3
31. Master Closet
32. Master Ensuite
33. Terrace

This development consisted of 36 luxury golf villas at the Pebble Beach Resort in California. The elegant design and layout offers generous spaces designed to offer a wonderful experience of living through visual connections and sweeping, calming views of the outdoors.

THE RESIDENCES AT SECRET BAY RESORT
PORTSMOUTH, DOMINICA

HOSPITALITY | LEISURE | COMPLETED



ARGO has been retained as Secret Bay's Architects, since the passing of Hurricane Maria and is currently working on the expansion of the Residences and the amenities core to support the future expansion of the resort.

ZING ZING RESTAURANT
SECRET BAY RESORT, DOMINICA

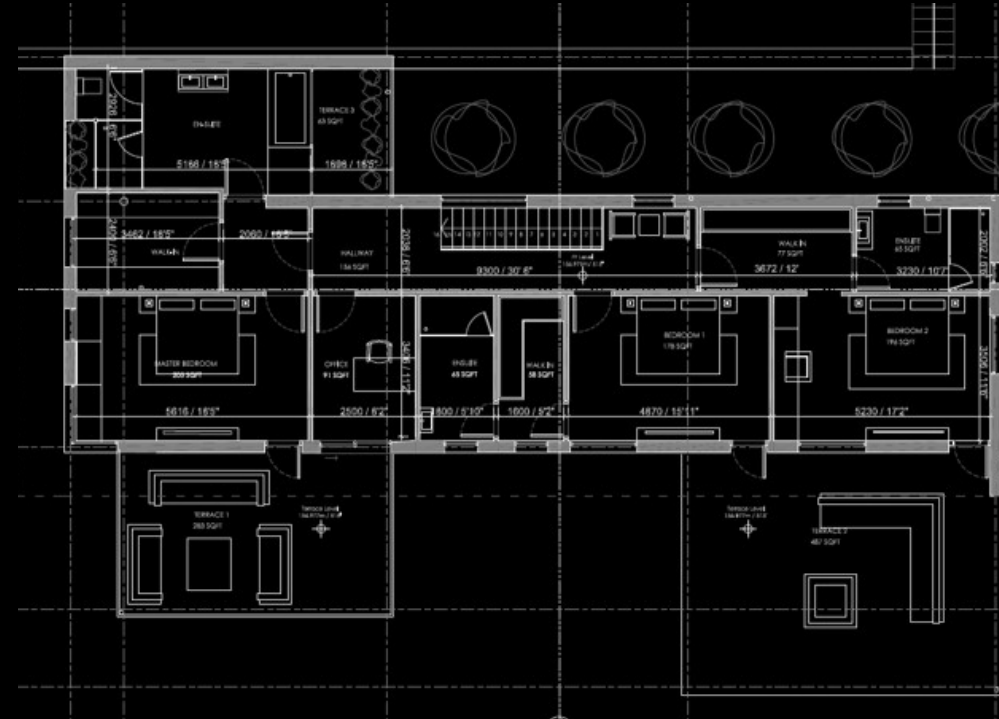
HOSPITALITY | COMPLETED



The 2019 International Property Awards (Americas) winner for Best Leisure Architecture, Zing Zing is a sit-down restaurant that offers a 'no menu' dining experience, with breath taking views of Tibay Beach. Zing Zing sets a romantic scene with a canopy-styled roof, display kitchen and private dining room.

VINCY VILLA
BRIGHTON, ST. VINCENT & THE GRENADINES

RESIDENTIAL | UNDER CONSTRUCTION



First Floor



This 4,550 square feet residential property features stunning ocean views, with an additional 505 square feet independent guest house with ensuite facilities.

MARRIOTT HOTEL
PORT-AU-PRINCE, HAITI

HOSPITALITY | LEISURE | COMPLETED



The hotel is designed as two connected volumes. The first volume is the 12 storey bedroom block of 175 bedrooms (including 5 suites). The ground floor of this element forms the transition to the second volume and includes the reception, concierge, cafe and shop. The second volume is the 2 storey wing to the rear that contains the rest of the front of house areas, including the bar, restaurant, ballroom, meeting room, board room and the back of house support areas.

MARRIOTT HOTEL SUITES
PORT-AU-PRINCE, HAITI

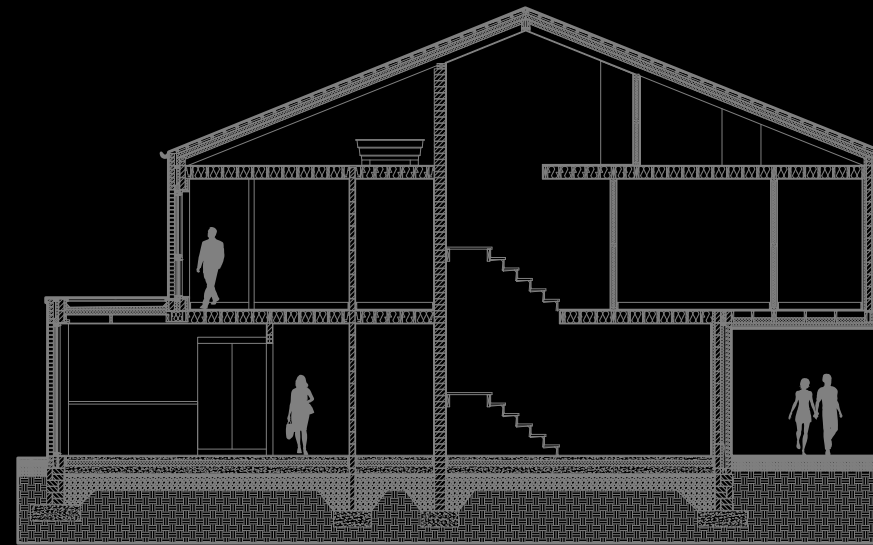
HOSPITALITY | LEISURE | COMPLETED



These rooms and suites, with Haitian-inspired artwork, sleek décor and spacious workstations offer picturesque views of Port-au-Prince.

TEMPLEOGUE HOUSE
DUBLIN, IRELAND

RESIDENTIAL | COMPLETED



Section



Templeogue House is a new-build residence consisting of a three-storey, four double bedroom dwelling comprising of 1,800 square feet. The exterior is a brick finish, zinc clad dormer and cantilever soffit, with expansive full height Aluclad triple glazed windows. The house also has Iroko hardwood timber louvred screens and side gate, along with a 3m cantilevered front first floor bay and a slate finished pitched roof.

RATHFARHAM HOUSE
DUBLIN, IRELAND

RESIDENTIAL | COMPLETED



This property in South Side, Dublin was renovated into a modern dwelling which included the addition of a contemporary extension.

MT. WYNNE GOLF RESORT

MY. WYNNE , ST.VINCENT & THE GRENADINES

HOSPITALITY | LEISURE | DESIGN



Sketch of Hotel Foyer



Sketch of 4 Bedroom Villa

The design for the Mount Wynne Resort is set within the lush scenery of St. Vincent and the Grenadines. The project involved a 3D visualisation for Mount Wynne's residences and hotel, which included 300 rooms, conference amenities, health spa, professional lawn tennis facility, 18-hole golf course, small marina, restaurants, chandlery and boutiques.

KENDLESTOWN RISE VILLA

DUBLIN, IRELAND

RESIDENTIAL | DESIGN



Ground Floor



Look and feel reference image.

Kendlestown Rise Villa is a one-storey property of 2,820 square feet. It offers four bedrooms, four bathrooms and a sunroom. Open plan living encloses the feature courtyard that serves as a focal point and central amenity.

CARTON HOUSE HOTEL
KILDARE, IRELAND

HOSPITALITY | LEISURE | COMPLETED



This project involved the conservation and conversion of Carton House into a '4-star plus' hotel comprising 165 bedrooms, 147 of which are in a new-build hotel block, and 18 of which are in the original main house.

CARTON HOUSE HOTEL
KILDARE, IRELAND

HOSPITALITY | LEISURE | COMPLETED



The historic and stately Carton House Hotel conversion project included the addition of several bars, restaurants, banqueting hall, leisure centre and spa.

CARTON HOUSE CLUBHOUSE

DUBLIN, IRELAND

HOSPITALITY | LEISURE | COMPLETED



The Carton House Clubhouse sits within 1,100 acres of walled parkland on the prestigious Carton House estate. The members' clubhouse features a state of the art Pro-Shop, the exclusive Vaulted Lounge and Carriage House, which offers a social space boasting breath taking golf course views.

GOLF UNION OF IRELAND FACILITIES

DUBLIN, IRELAND

HOSPITALITY | LEISURE | COMPLETED



Carton House is the home of the Golfing Union of Ireland and the GUI's National Golf Academy. The driving range, all 22 acres of it – includes five USGA specification greens and four grass tee boxes. The Golfing Union of Ireland (GUI) headquarters incorporates the historical integrity of the structures on the Carton site within its design.

CARTON HOUSE VILLAS

KILDARE, IRELAND

HOSPITALITY | RESIDENTIAL | COMPLETED



The Carton House villas are tastefully designed to reflect the estate's historic charm. The fifty four villa development offer all the modern amenities expected of a well appointed resort. From large open plan rooms with private dining facilities, each villa is uniquely luxurious.

GARY PLAYER CHAMPIONSHIP GOLF RESORT

DAUPHIN, ST. LUCIA

HOSPITALITY | LEISURE | DESIGN



The Gary Player Championship Golf Resort was planned for the stunning northeast coast of St. Lucia. Master planned to occupy 600 acres of lush, tropical valley floor sweeping towards the Marquis Bay. Designed to be one of the Caribbean's finest luxury destinations, to include eighty-six high-end villas, a Gary Player Golf Hotel and signature golf course, along with a Pat Cash Sports and Wellness Hotel.

MONEENATIEVE NATIONAL SCHOOL

LEITRIM, IRELAND

RESIDENTIAL | COMPLETED



Perched on a mountain-top overlooking Lough Allen, surrounded by the breathtaking Iron mountains allowing this unspoiled part of the Irish country-side, unchanged for centuries, to be truly appreciated. This schoolhouse, constructed at the turn of the century, was falling to ruin when rescued, restored and reinvented. Passive house standards were embraced in transforming this piece of local history into 21st century luxury living.

PLANTATION GOLF AND COUNTRY CLUB

GEORGETOWN, GUYANA

LEISURE | RESIDENTIAL | DESIGN



Look and feel reference image.



Look and feel reference image.



The masterplan design for this four-hundred acre property consists of 100 golf villas, condominiums, town houses, a golf course and club house, medical centre, eco-business park, mixed-use offices and retail facilities and a training college along with a 5 star hotel.

LUXURY GOLF VILLA
GEORGETOWN, GUYANA

RESIDENTIAL | DESIGN



The Plantation Golf and Country Club luxury villas consist of 84 two-bedroom, two-storey villas of 1,800 square feet and 72 three-bedroom, two-storey villas of 2,300 square feet. This development also comprises of 100 golf villas ranging between 1,400-3,700 square feet. Villas featured covered verandah, pool, outdoor dining area and outdoor fire pit.

BUCCAMENT BAY RESORT
BUCCAMENT, ST. VINCENT & THE GRENADINES

HOSPITALITY | LEISURE | COMPLETED

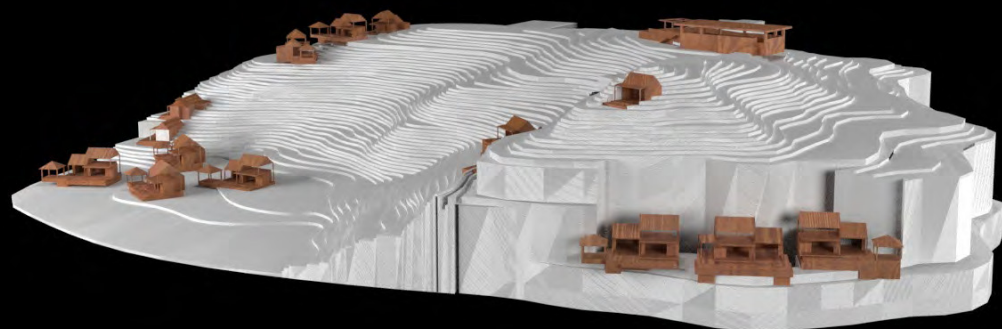


Buccament Bay Resort is a luxury, all-inclusive property containing single villas and multi-storey residential blocks, on the beautiful island of St. Vincent. This stunning site, bordered by lush mountains, a river and the ocean presented numerous infrastructure and logistic challenges, all safely negotiated to deliver the first phase of this unique development.

YOUNG ISLAND PRIVATE RESIDENCE CLUB

YOUNG ISLAND, ST. VINCENT & THE GRENADINES

HOSPITALITY | LEISURE | DESIGN



3D Site Model



Floor Plan



Look and feel reference image.

The design and redevelopment of this private residence club included upgrades to the island's forty eight new villas, pools, restaurants, lagoon bar, spa, gym, tennis court and water sports, all to exacting luxury standards.

H HOTEL
BARBADOS

HOSPITALITY | LEISURE | DESIGN



The design of this boutique hotel offered a new level of hotel luxury within the hospitality industry in Barbados. H Barbados is designed on the stunning seafront location of Hastings Beach in Christ Church, on the south coast.

CONTACT US

BARBADOS

115 Seaside Drive
Atlantic Shores
Christ Church

T +1 246 537 2746

DOMINICA

Hillsborough Street,
Roseau,
Dominica

T +1 767 613 5126

IRELAND

23 South Great George's Street,
Dublin 2,
Ireland

T +353 1 5635342

E info@argo-ds.com

W www.argo-ds.com

JAMAICA

60 Knutsford Boulevard,
9th Floor, Panjam Building
Kingston, Jamaica

T +1 846 470 8692

ST. VINCENT & THE GRENADINES

The Flintoff House,
Grenville Street,
St. Vincent & The Grenadines

T +1 784 457 1834





IRELAND

BARBADOS

ST. VINCENT &
THE GRENADINES

DOMINICA

JAMAICA

e: info@argo-ds.com

| www.argo-ds.com